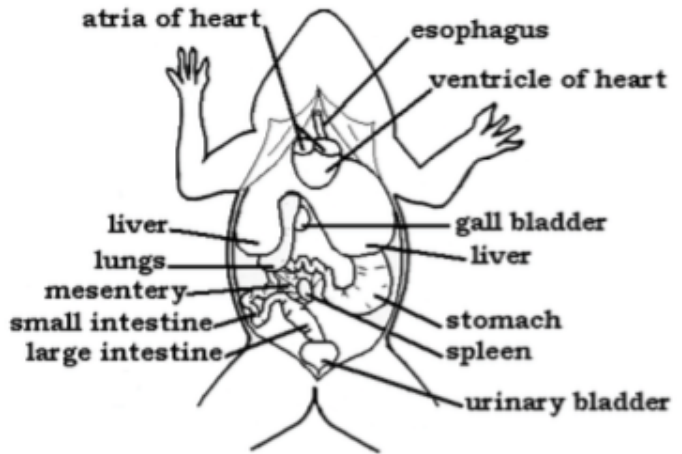


## Frog Lab Practical

Be able to locate and give the function of:

- Stomach
- Small Intestine
- Pancreas
- Mesentary
- Gallbladder
- Liver
- Cloaca
- Heart (atria and ventricles)
- Lungs
- Spleen



**heart (atria and ventricle)** – in the center at the anterior end between the forelimbs; atria – red brown, ventricle - white, the frog has a three chambered heart

**liver** – on both sides of the heart; contains three lobes (sections); largest organ in body; brownish to greenish

**gall bladder** – under the liver and attached to it; small round sac; yellow- green and slightly transparent

**esophagus** – attached to back of throat and stomach; cut as high up as you can; do not separate from stomach; white

**stomach** – widest part of digestive tract; very muscular; white

**small intestine** – extends from stomach to large intestine; smaller diameter than large intestine; white

**large intestine** – extends from small intestine to cloaca; larger diameter than small intestine; white

**cloaca** – the very end of the digestive tract; cut as low down as you can; white

**mesentery** – the connective tissue holding the different areas of the small intestine together; very thin but strong; clear

**spleen** – round body similar in size to the heart; found in the mesentery; makes red blood cells; dark reddish brown lungs – to the right and left of the heart underneath the liver; spongy sacs; color varies – dark gray to reddish brown

You will be marked on:

- You dissection skill
- Locating major organs -quiz
- Written portion
- Lab clean up
- Respect towards lab specimen