

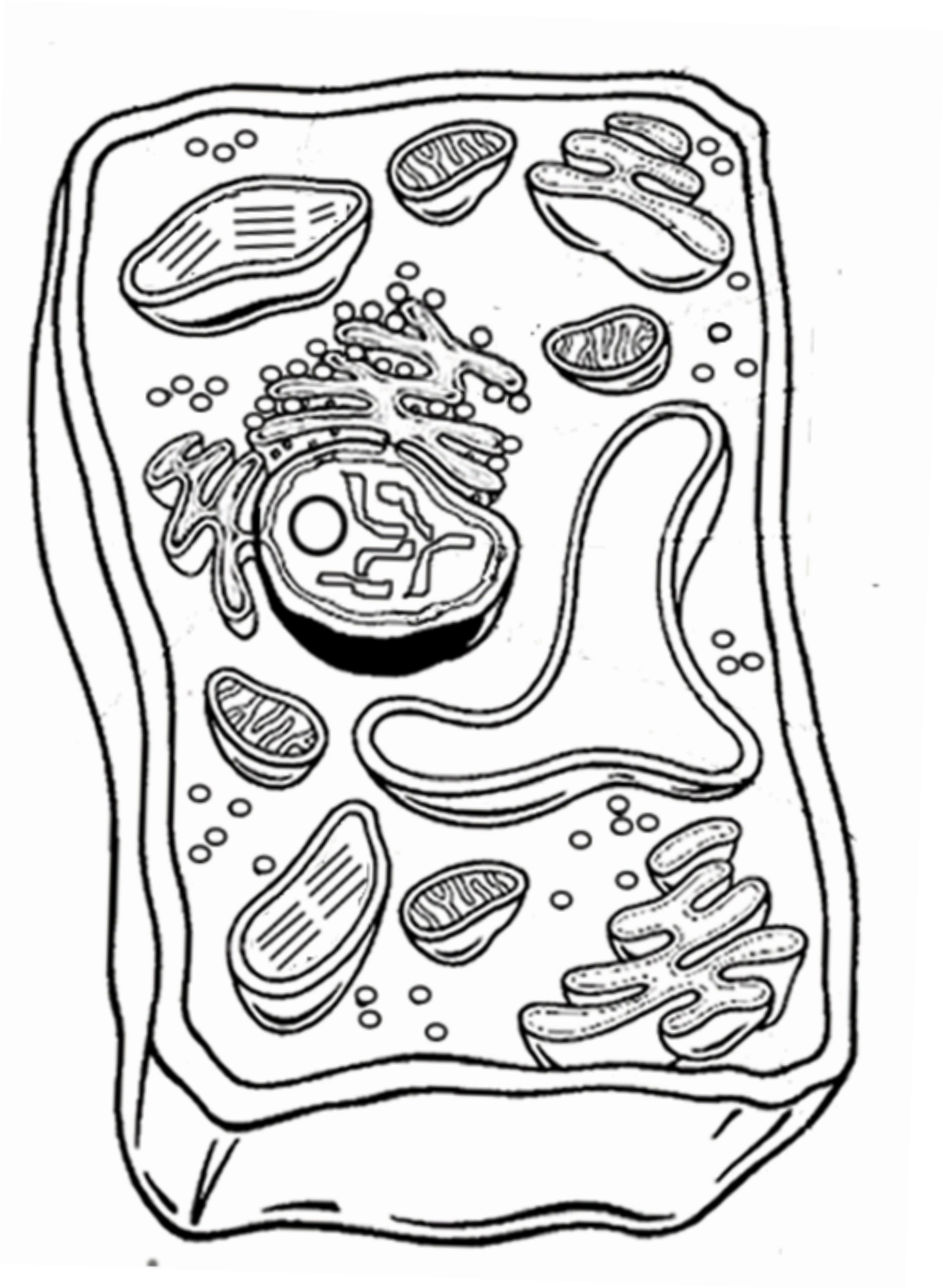


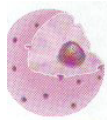
Plant Cell Coloring

Directions: Define each of the parts of the plant cell and then **label and color** the cell parts on the drawing of the plant cell. Remember to provide a legend of which colours you used.

Organelle and Function	Colour Used
Cell Membrane -	
Cell Wall -	
Cytoplasm -	
Chloroplasts -	
Golgi Apparatus -	
Mitochondria -	
Ribosomes -	
Endoplasmic Reticulum -	
Vacuole -	

PLANT CELL





Animal Cell

Directions: Define each of the parts of the plant cell and then **label and color** the cell parts on the drawing of the plant cell. Remember to provide a legend of which colours you used.

Organelle and Function	Colour Used
Cell Membrane -	
Centrioles-	
Cytoplasm -	
Lysosomes	
Golgi Apparatus -	
Mitochondria -	
Ribosomes -	
Endoplasmic Reticulum -	
Vacuole -	

ANIMAL CELL

