

# Aquatic vs Terrestrial Ecosystems

---



# Biomes

- \* Two large biomes exist on Earth:
  - \* Terrestrial
  - \* Aquatic



# Terrestrial vs. Aquatic

- \* **Terrestrial Biomes:** all living elements of a land based environment and the interactions between them.
- \* **Aquatic Biomes:** all living elements of a water based environment and the interactions between them.



# Biomes

## Terrestrial

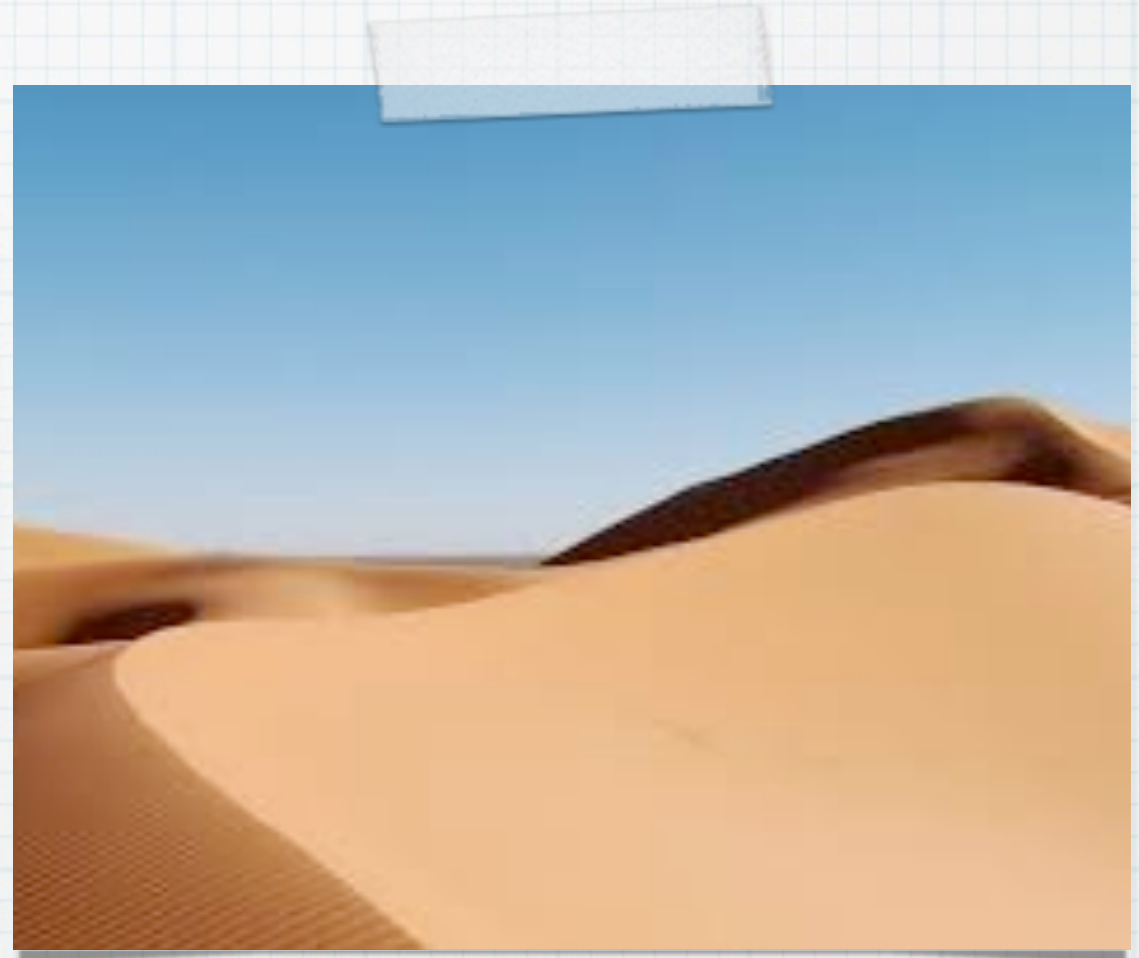
Desert  
Tundra  
Grasslands  
Deciduous Forest  
Boreal Forest  
Rainforest

## Aquatic

Freshwater  
Marine

# Desert

- \* Very Dry Climate, 0-25 cm per year of precipitation.
- \* Temperature range 0-30 C
- \* May have hot or cold deserts





# Desert

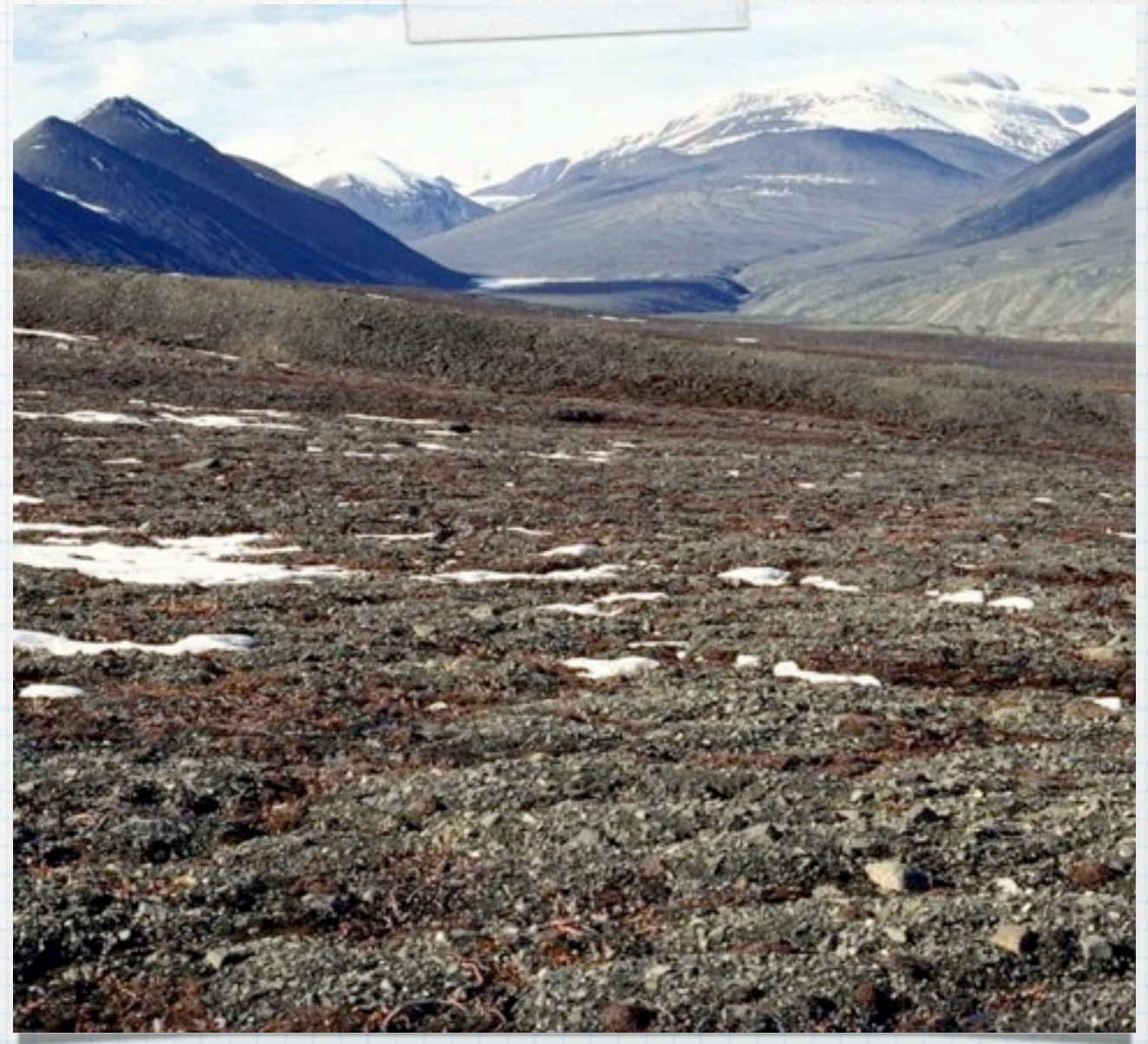
- \* **Vegetation:** Cacti, shrubs, grasses, few trees
- \* **Wildlife:** Desert tortoises, wren, scorpions





# Tundra

- \* 20-50 cm per year of precipitation.
- \* Average temperature of less than 5 C
- \* Permafrost layer beneath the soil





# Tundra

- \* Short growing season
- \* Low Diversity
- \* Vegetation: Lichens, mosses, short grass, no trees, few shrubs
- \* Wildlife: Caribou, Arctic Foxes, Lemmings





# Grasslands

- \* 25-75 cm per year of precipitation
- \* Temperature range 5 - 20 C
- \* Rich, Fertile Soil
- \* Moderate growing season





# Grasslands

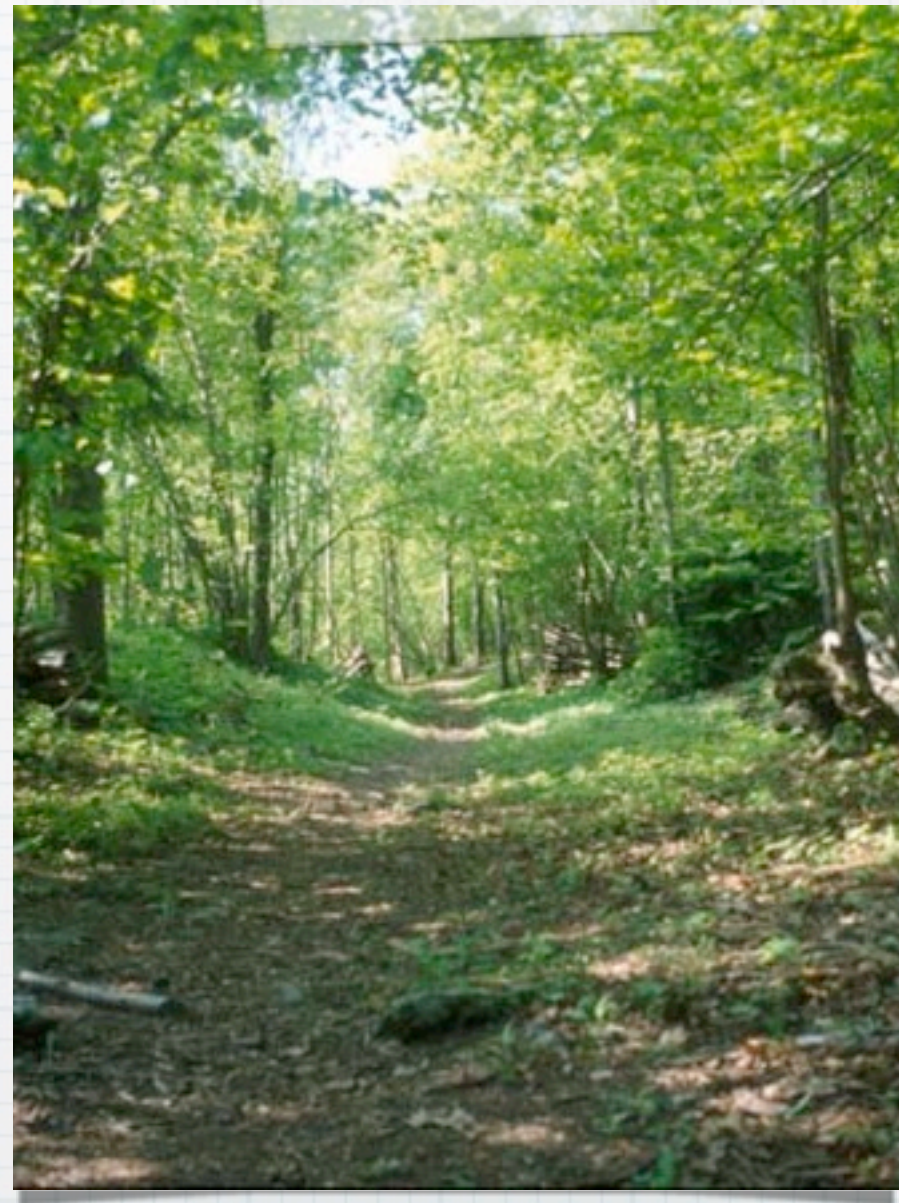
- \* Low Diversity
- \* Vegetation: Short or tall grasses
- \* Wildlife: Grasshopper, Bison, Coyotes





# Deciduous Forest

- \* 75-123 cm per year of precipitation
- \* Temperature range 5 - 15 C
- \* Fertile soil
- \* Moderate-long growing season





# Deciduous Forest

- \* **Vegetation: Deciduous Trees and Other Flowering Plants**
- \* **Wildlife: Squirrels, Mice, Deer, Black Bears**





# Boreal Forest

- \* 50-200 cm per year of precipitation
- \* Temperature range less than 5 - 10 C
- \* Fertile soil
- \* Short growing season





# Boreal Forest

- \* Vegetation: Conifers
- \* Wildlife: Seed eating birds, grey wolves





# Rainforest

- \* 150-500 cm per year of precipitation
- \* Temperature range 25 - 30 C
- \* Fertile soil
- \* Long growing season





# Rainforest

- \* **Vegetation: Large Trees**
- \* **Wildlife: Elephant, Tigers, Chimpanzees, Trillions of Insects**





# Freshwater Biomes

- \* Include lakes, ponds, streams, bogs, and wetlands





# Marine Biomes

- \* Found in oceans
- \* Include coral reefs, ocean floor, open ocean and intertidal zones

